



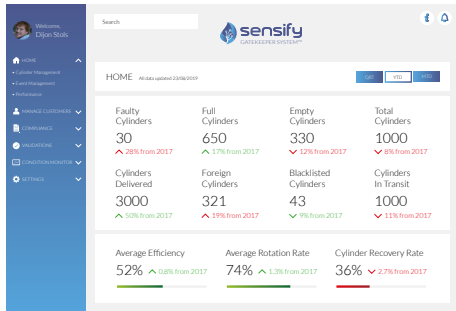
1 Lyric Square  
London  
W6 0NB  
United Kingdom

E: [sales@sensify.net](mailto:sales@sensify.net)

Unit 3956, Waterfall Country  
Estate, Juskaei View, Ext 40,  
Midrand, Johannesburg,  
South Africa

T: +27 82 375 7955





## OUR INNOVATION, YOUR SOLUTION

The Sensify Gatekeeper System (SGS) delivers a revolutionary solution giving LPG companies worldwide unparalleled control over their cylinders for the first time, thereby eradicating theft and piracy and ensuring safety and customer loyalty, whilst analysing and optimising operations.

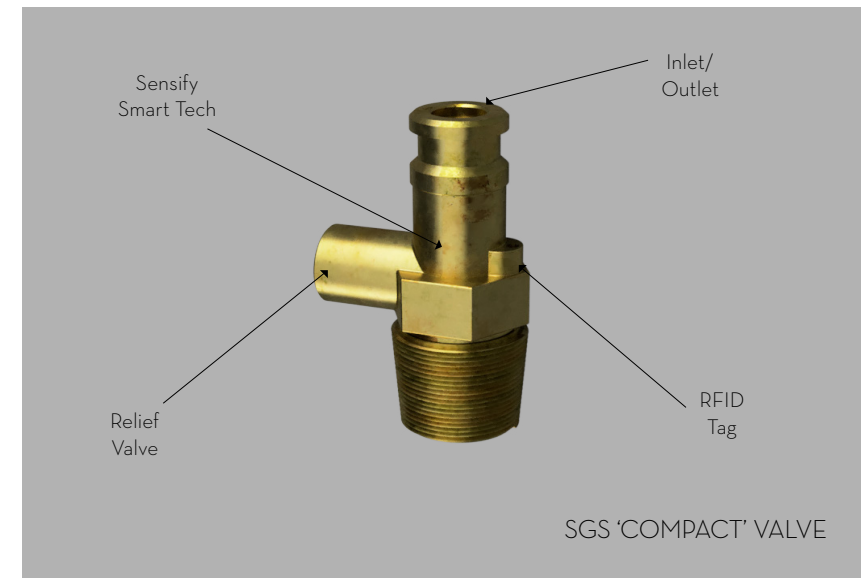
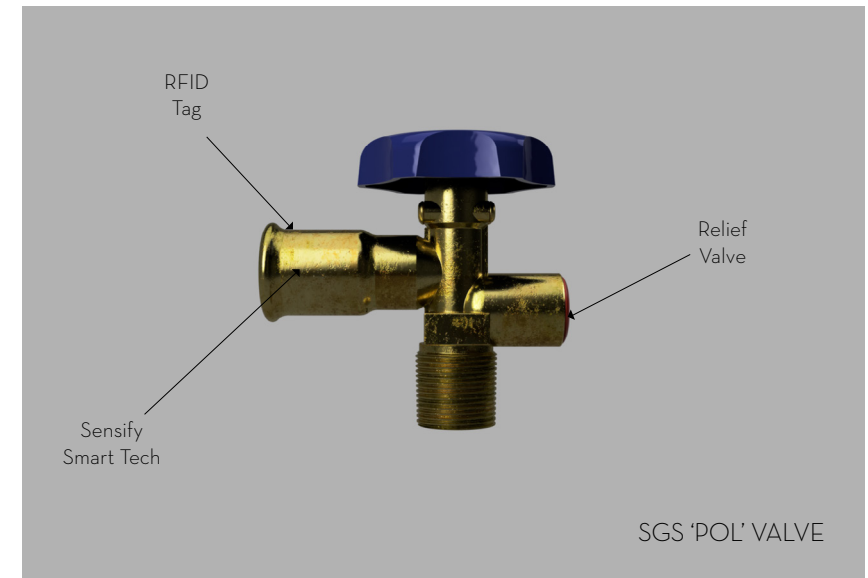
SGS is a world-leading combination of mechanical, electronic, software and radio frequency engineering. It delivers a unique 'lock and key' system that secures cylinders with its tamper-proof valve, featuring built-in RFID technology, that can only be unlocked by specialist filling nozzles controlled by a secure cloud-based application.

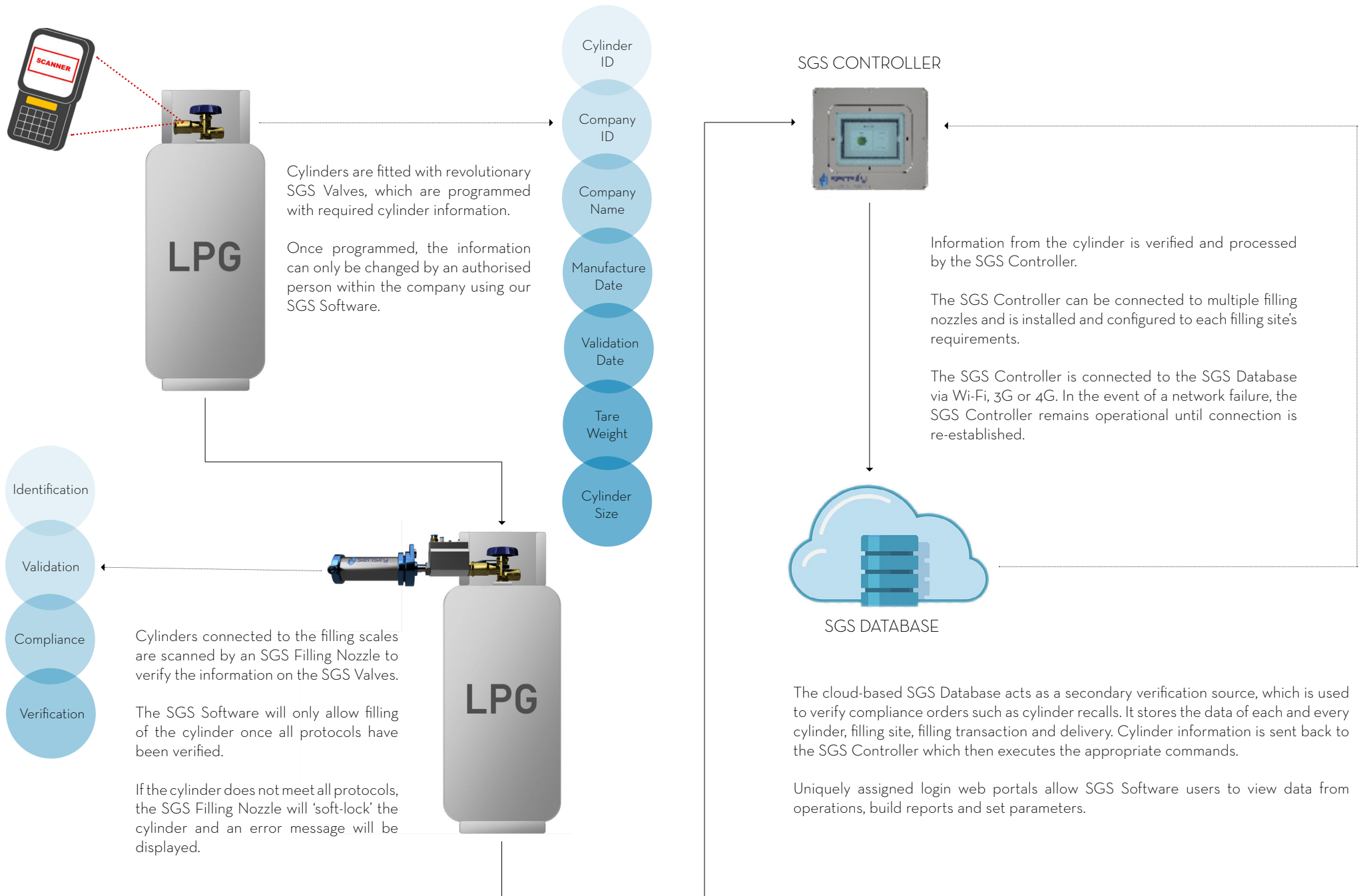
### SMART, SAFE AND SECURE

SGS enables LPG companies to track in realtime the life cycle of their cylinders from global supplier depots, filling sites, distributors and re-sellers. It also enables LPG companies to block the filling of any of its cylinders, wherever they are in the world, therefore rendering them useless if they have been stolen or if a rogue filler attempts to use them. This realtime tracking functionality, allows enforced servicing or removal of cylinders from the market, ensuring the safety and compliance of all of the company's LPG cylinders.

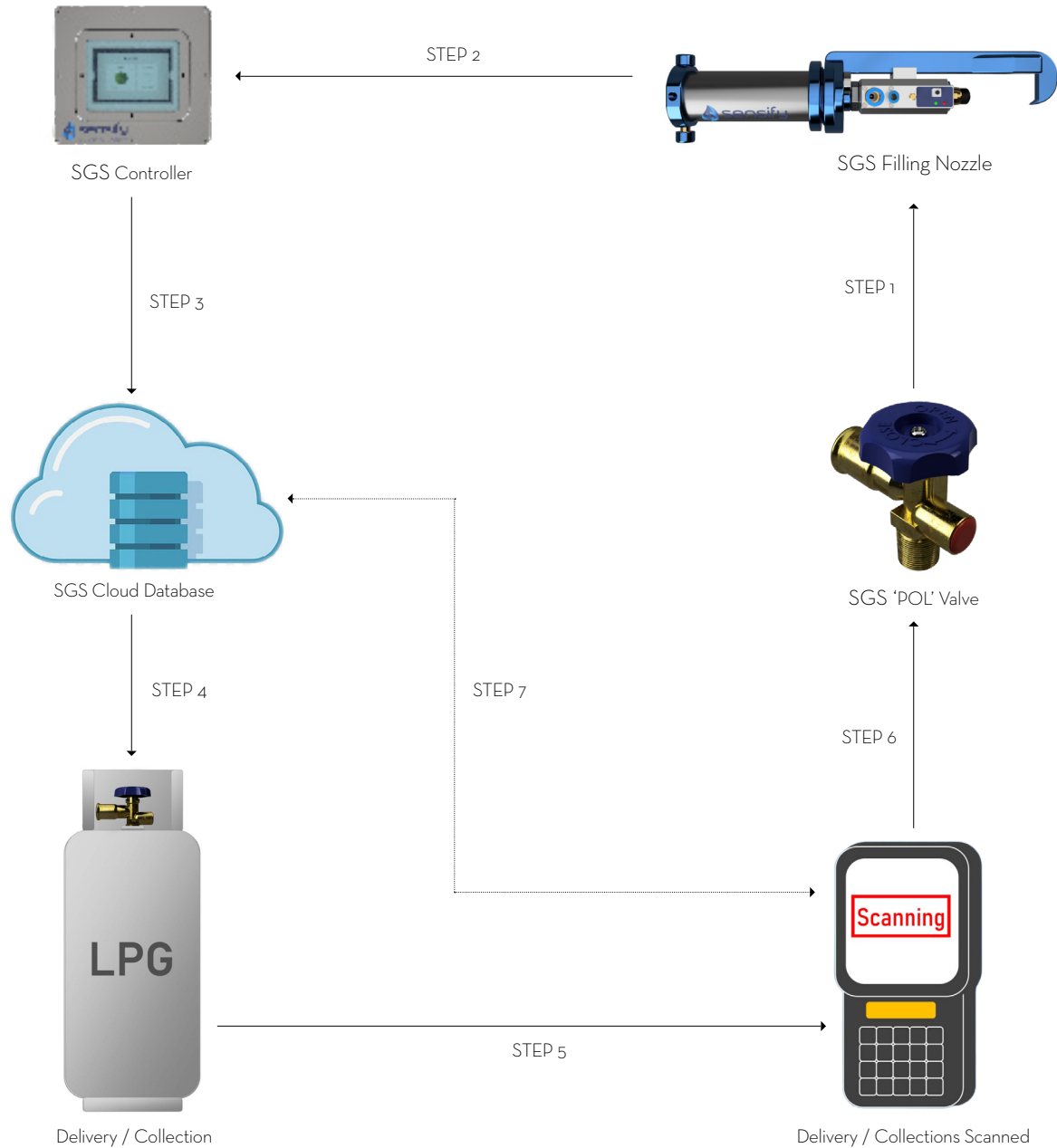
The SGS Software provides users with recommendations for optimisation and increased performance. Our software is a standalone solution that can be integrated with all ERP and accounting software programs.

## HOW DOES IT WORK?





## FROM FILLING TO DELIVERY



STEP 1	Cylinders installed with SGS Valves are connected to an SGS Filling Nozzle which reads the built-in tamper-proof RFID tags.
STEP 2	The information is sent to the SGS Controller for verification and access is either granted or denied.
STEP 3	The SGS Controller sends the completed filling transaction to the SGS Cloud Database.
STEP 4	The SGS Cloud Software updates the filled cylinder status and the system confirms to the user that it is ready for dispatch.
STEP 5	The filled cylinder is loaded and delivered to the customer.
STEP 6	The customer's details are entered on delivery and the cylinder is scanned. Empty cylinders are scanned and upon return to the filling depot their validation / maintenance record is checked before being approved for refilling.
STEP 7	All data is updated to the SGS Cloud Database in realtime.



### Validation Control

This takes full control of the cylinder maintenance in order to ensure customers always receive a properly maintained, full cylinder.

Validation Control records:

- Exactly who serviced the cylinder
- When it was last serviced
- What has been done to the cylinder

It also sets enforced validation / maintenance periods by 'soft locking' the cylinders when they are due.



### Compliance

The SGS Software allows full control for users to set and enforce their filling operations standards, for example:

- The removal of their old cylinders from the market by way of a simple recall order
- The recall of faulty cylinders by entering the cylinder details
- The ability to set and enforce compliance / maintenance standards across different filling stations



### Access Control

Through the increase of cylinder circulation rate by securing, tracking, recovering and maintaining cylinders, users can reduce the number of new cylinder purchases thereby increasing profits effortlessly.

Users can:

- Prevent rogue fillers and cross filling
- Prevent the filling of invalidated cylinders



### Manage Cylinder Rotations

Not only does the SGS Software increase profitability by ensuring an increase in cylinder rotations, it allows the user to manage and monitor cylinder rotation rates to ensure cylinders that are more often filled and used, are regularly inspected and checked for safety.

## FEATURES & BENEFITS



### Customer Delivery

The SGS Software assigns the cylinder's ID to the customer, stores the customer's information and the delivery location. The delivery is then confirmed by the customers signature.



### Condition Monitoring

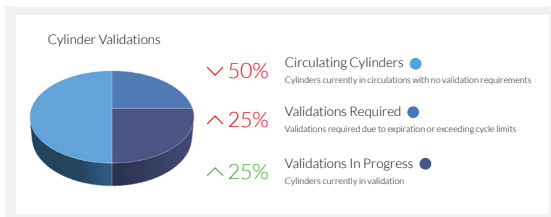
The SGS Software monitors equipment remotely and provides users with the ability to schedule routine maintenance thereby eliminating downtime and maintaining maximum productivity.



### Customer Value Monitoring

The SGS Software calculates the value of each customer regionally by monitoring customer usage over a determined period through cylinder deliveries and combines this data with the total regional deliveries to evaluate an areas market value in relation to the volume of LPG consumed.





## DASHBOARD

The dashboard has been designed for ease of use which enables users to access detailed information effortlessly by fast navigation showing realtime displays regarding its current operations.

## THE CLOUD

The SGS Software is entirely cloud-based which provides users with peace of mind and access over multiple devices.

## MANAGEMENT DASHBOARDS

Each filling station is assigned with its own account, unique username and password. Each user dashboard displays only its own performance and information.

The user's primary filling station's 'Management Dashboard' displays the content of all of its filling stations which enable it to assess each individual site's performance, customer deliveries, when cylinders are due for validation etc. in order to maximise efficiency and profits.

## PERFORMANCE INDICATORS

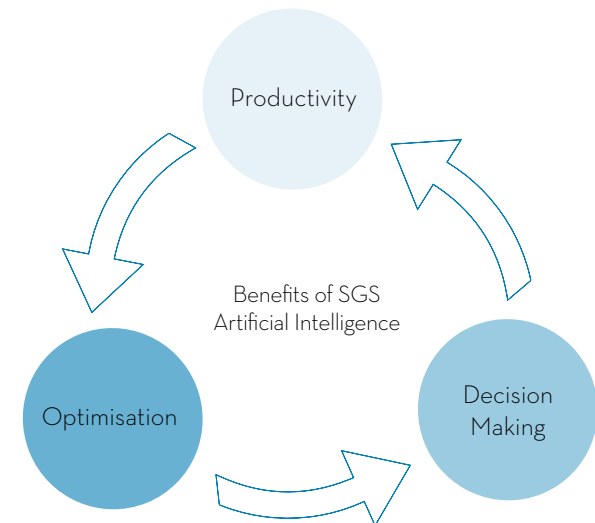
Performance indicators are displayed on the Dashboard. Data from current operations are compared to previous periods to calculate whether a company / distributor is underperforming or exceeding previous periods.

# DASHBOARDS & ANALYTICS



## DEVELOPMENT ROADMAP

### BESPOKE SGS AI SOFTWARE



### ADDITIONAL SENSIFY PRODUCTS





1 Lyric Square  
London  
W6 0NB  
United Kingdom

E: [sales@sensify.net](mailto:sales@sensify.net)

Unit 3956, Waterfall Country  
Estate, Juskaei View, Ext 40,  
Midrand, Johannesburg,  
South Africa

T: +27 82 375 7955

